



“Made in China, Loved by the World”



1

Modulul Gree WI-FI

2

Aplicatia GREE+

3

Pasii instalarii aplicatiei

1

Modulul Gree WI-FI

Modulul Gree Wi-fi poate fi positionat in locuri diferite in functie de modelul aparatului.

BORA A5



VIOLA A3



U-CROWN

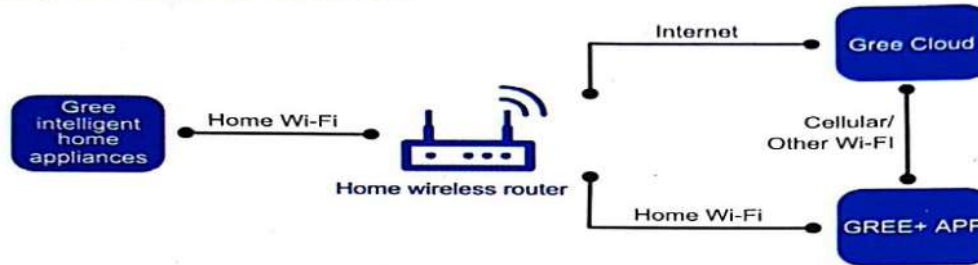


2

Aplicatia GREE+

GREE+ App Operation Manual

Control Flow Chart



Operating Systems

Requirement for User's smart phone:



iOS system
Support iOS7.0 and
above version



Android system
Support Android 4.4 and
above version

Download and installation

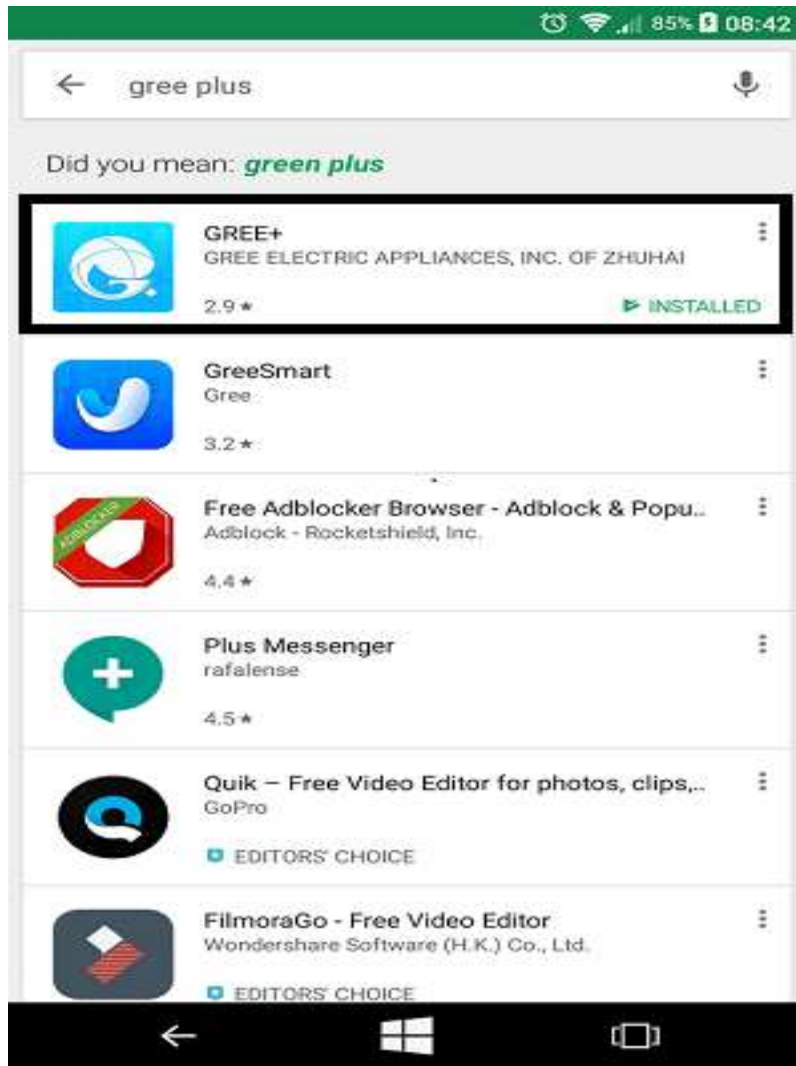


GREE+ App Download Linkage

Scan the QR code or search "GREE+" in the application market to download and install it. When "GREE+" App is installed, register the account and add the device to achieve long-distance control and LAN control of Gree smart home appliances.

For more information, please refer to "Help" in App.

Aplicatia GREE+ in GOOGLE PLAY



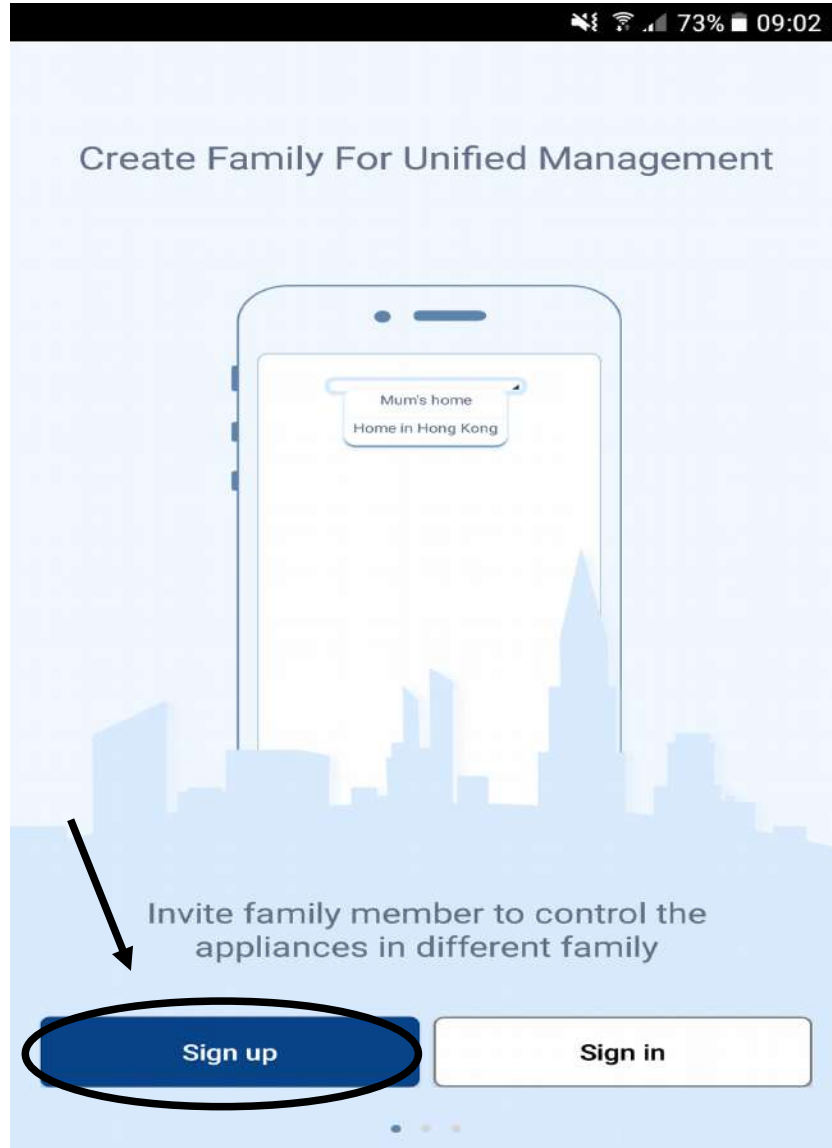
Aplicatia GREE+ in APP STORE



3

Pasii instalarii aplicatiei

Crearea contului Gree+



Sign up

Username

Email

Password

Confirm password

Region

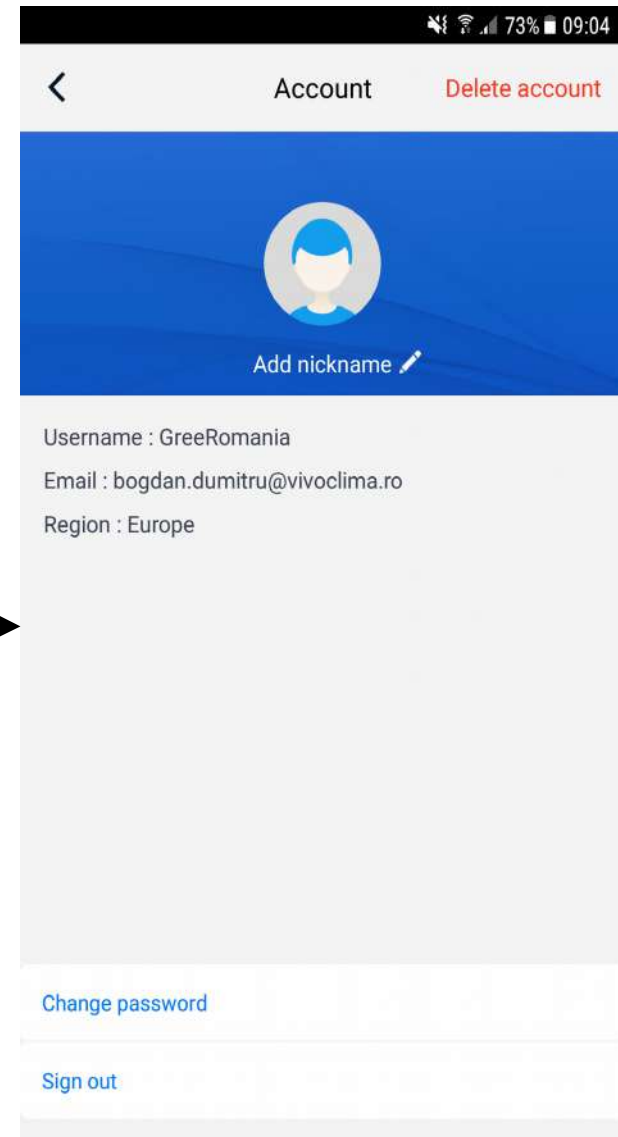
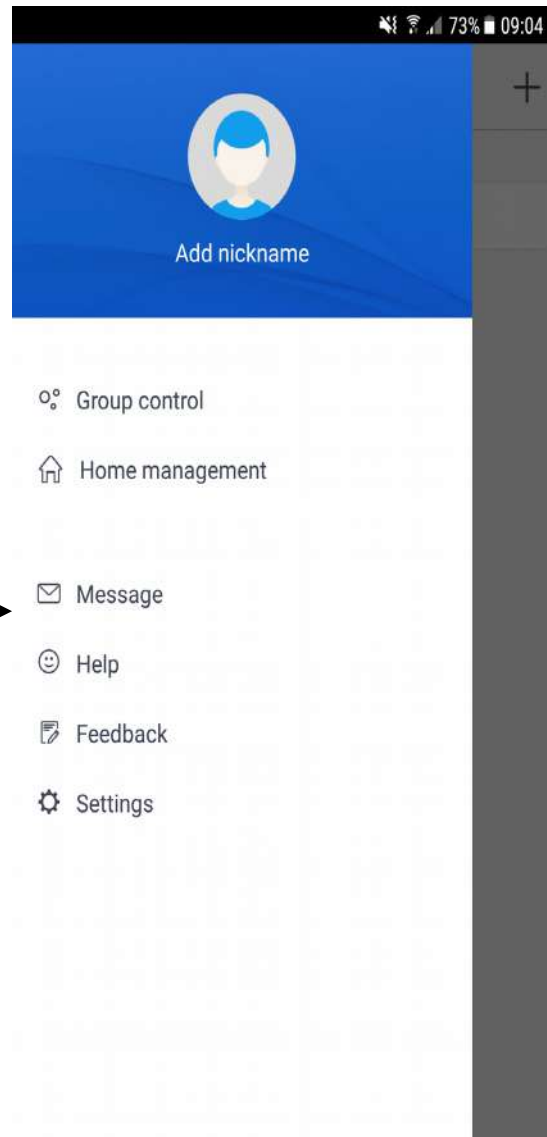
I have read and agree [Gree user's agreement](#)

Sign up

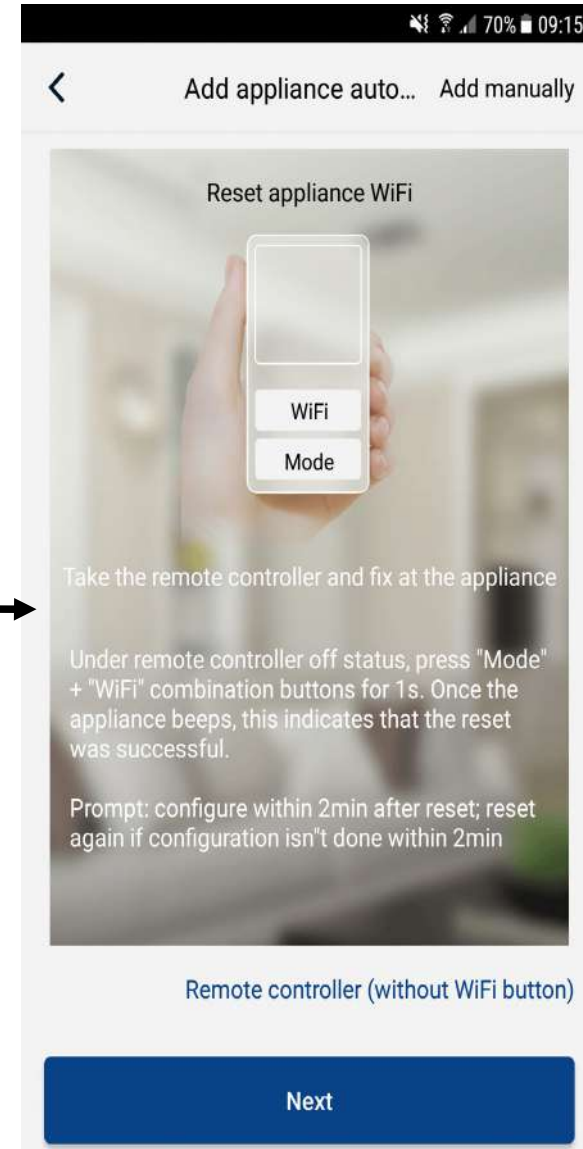
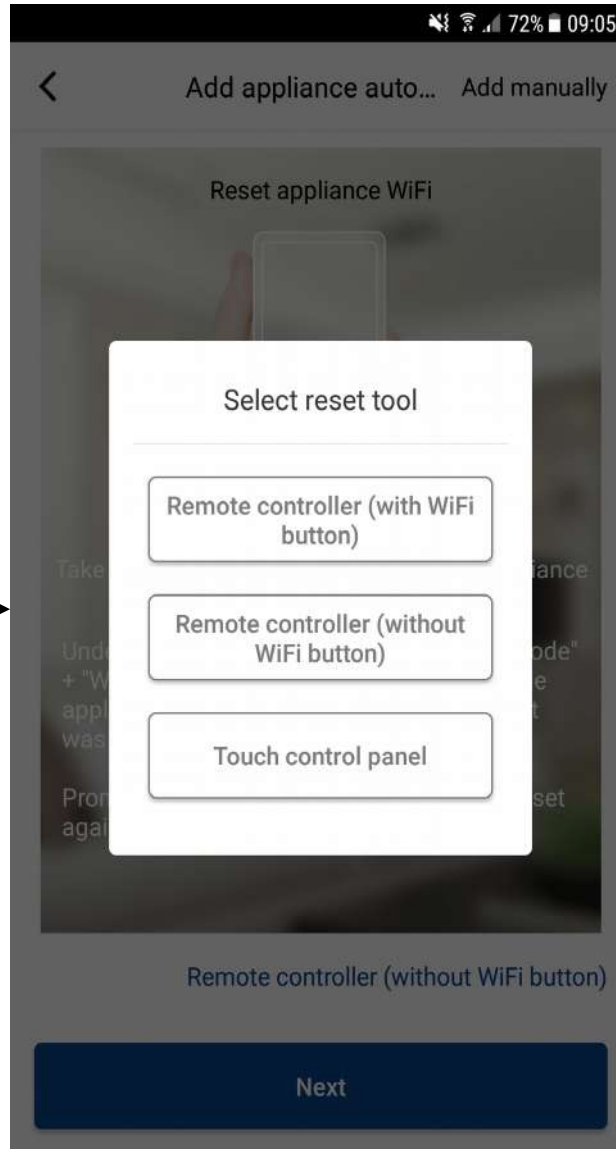
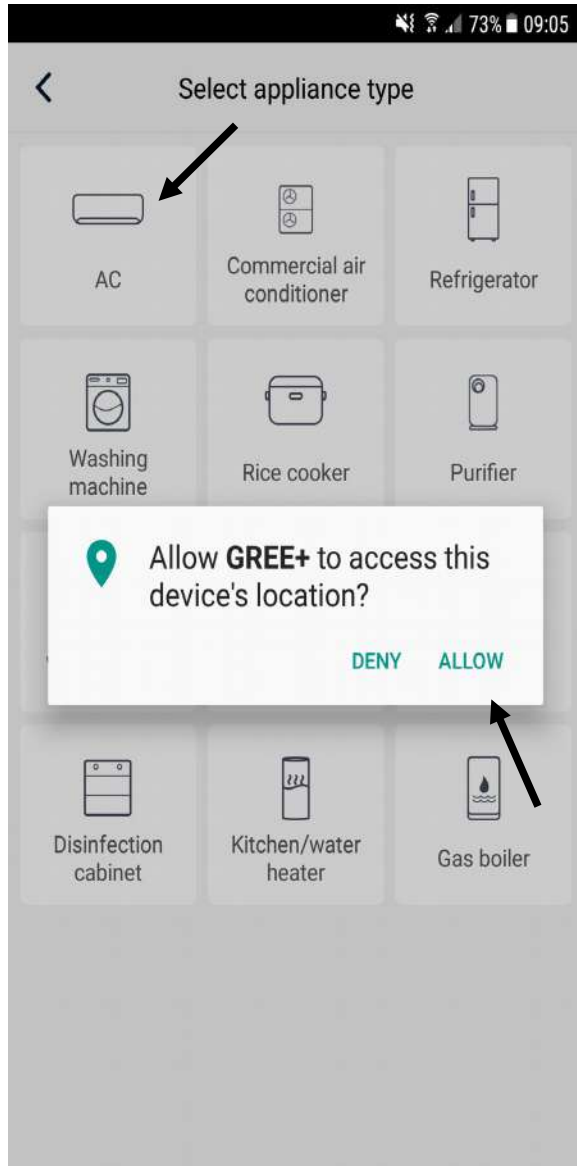
or

This screenshot shows the sign-up form in the app. It has a back arrow and the title 'Sign up'. The form includes fields for Username, Email, Password, and Confirm password (with an eye icon to toggle visibility). There is also a Region field with a location pin icon and a right arrow. Below the fields is a checkbox that is checked, with the text 'I have read and agree [Gree user's agreement](#)'. A large blue 'Sign up' button is at the bottom. Below the button, it says 'or' and there is a Facebook icon.

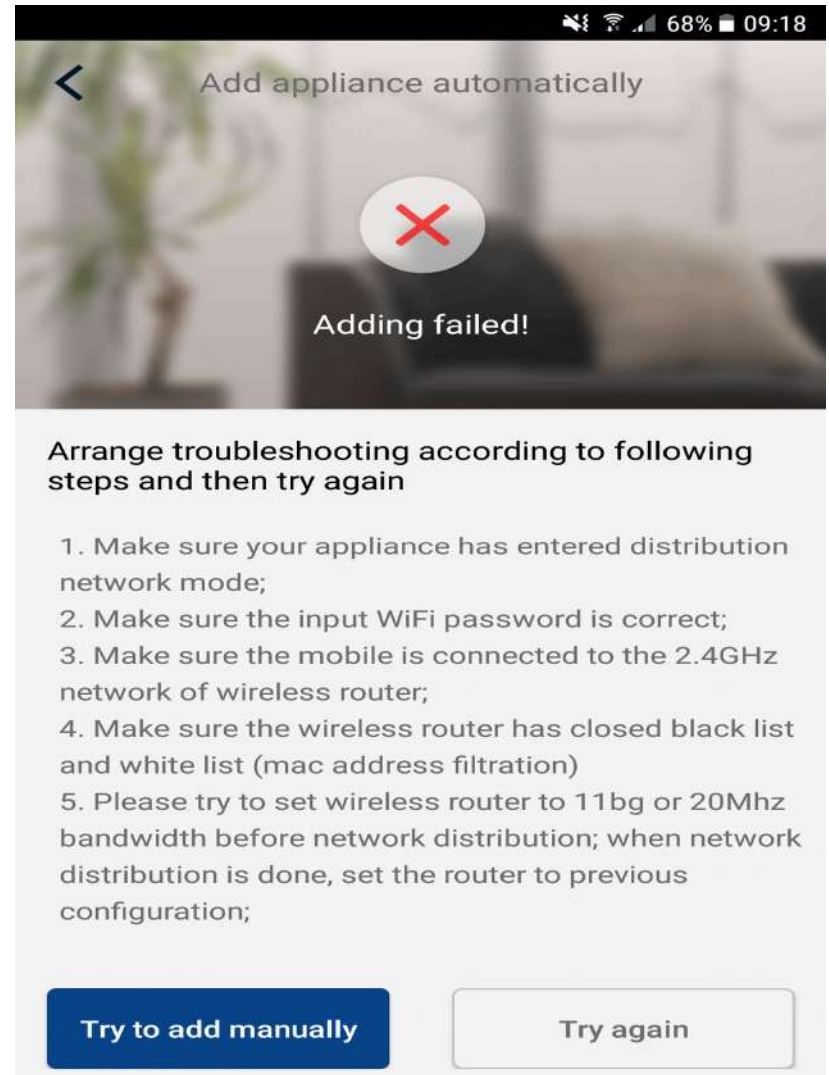
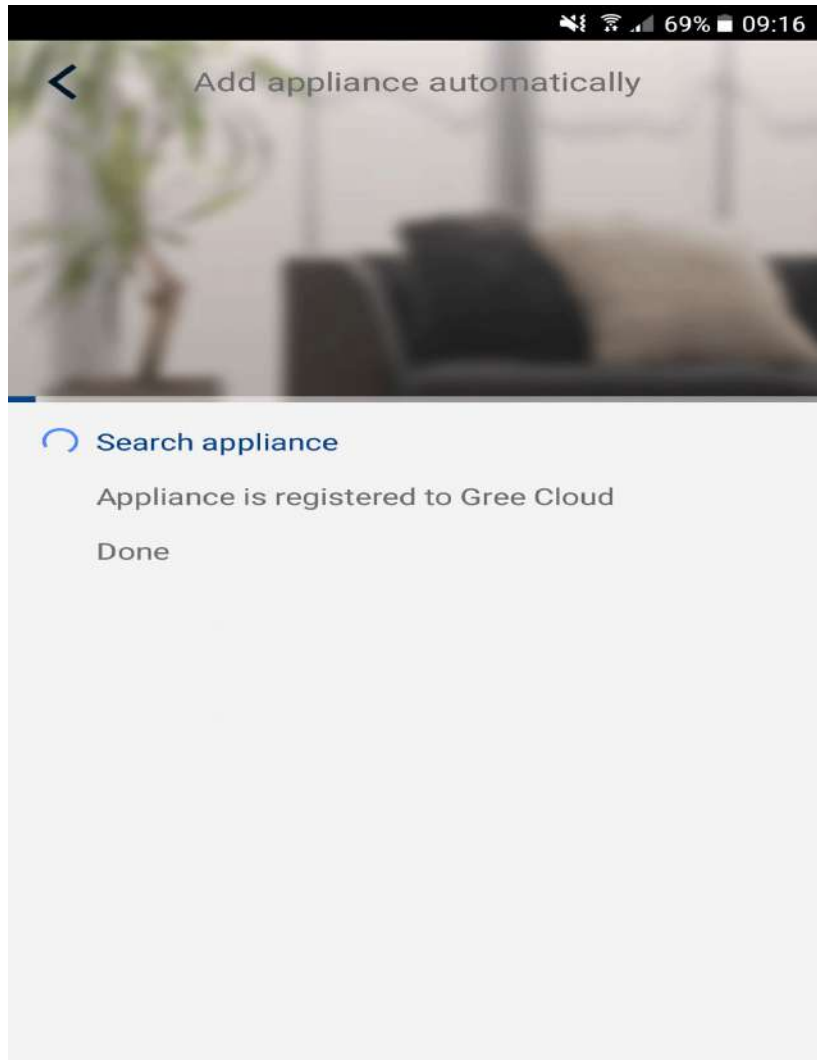
Username-ul trebuie sa fie unic (nu se poate repeta), iar regiunea Europa.



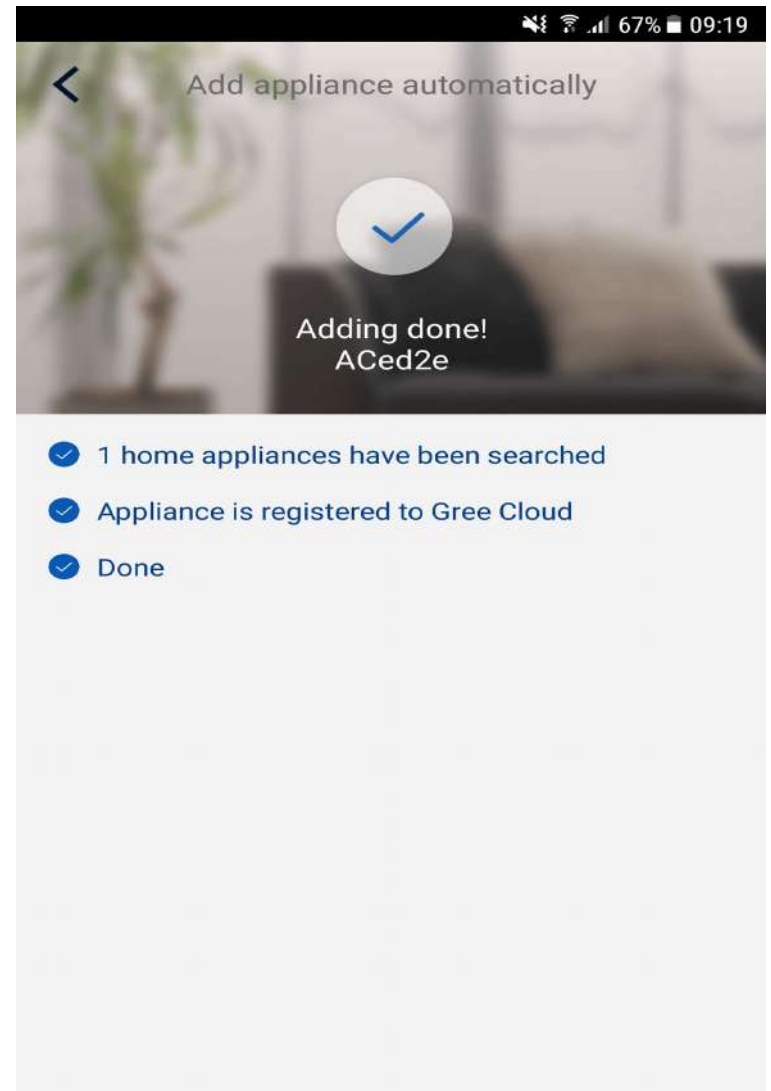
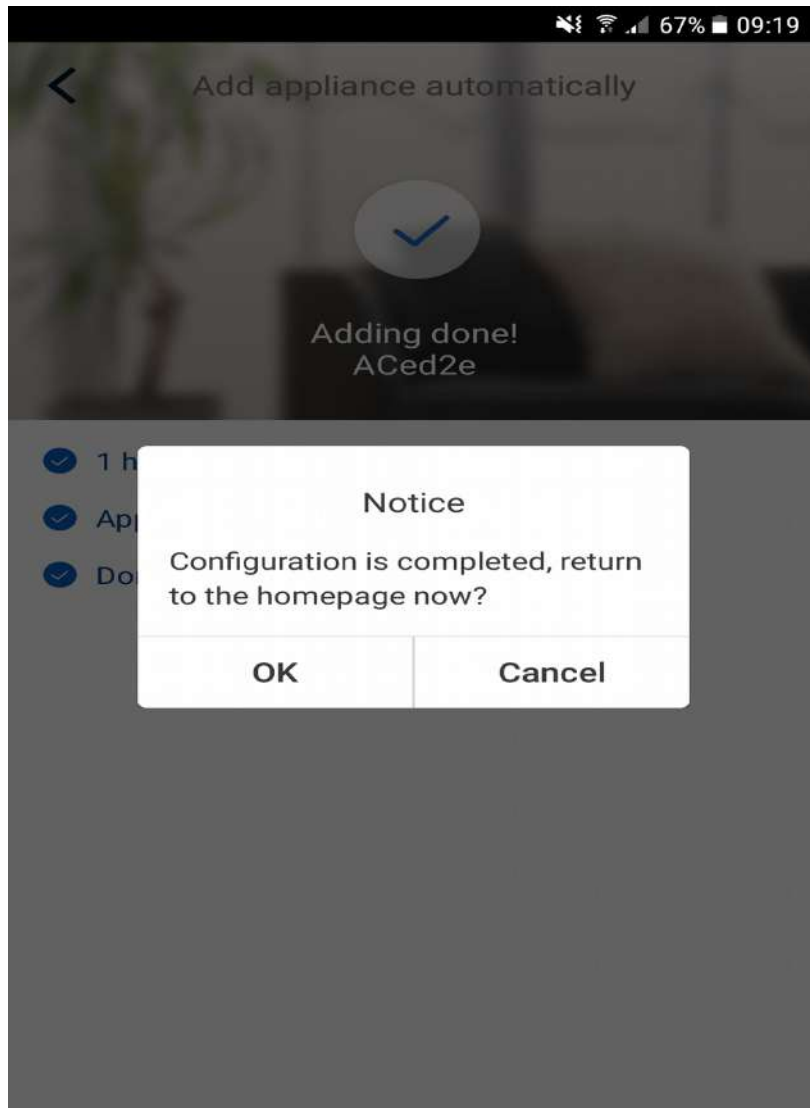
Aprobatii toate cererile aplicatiilor



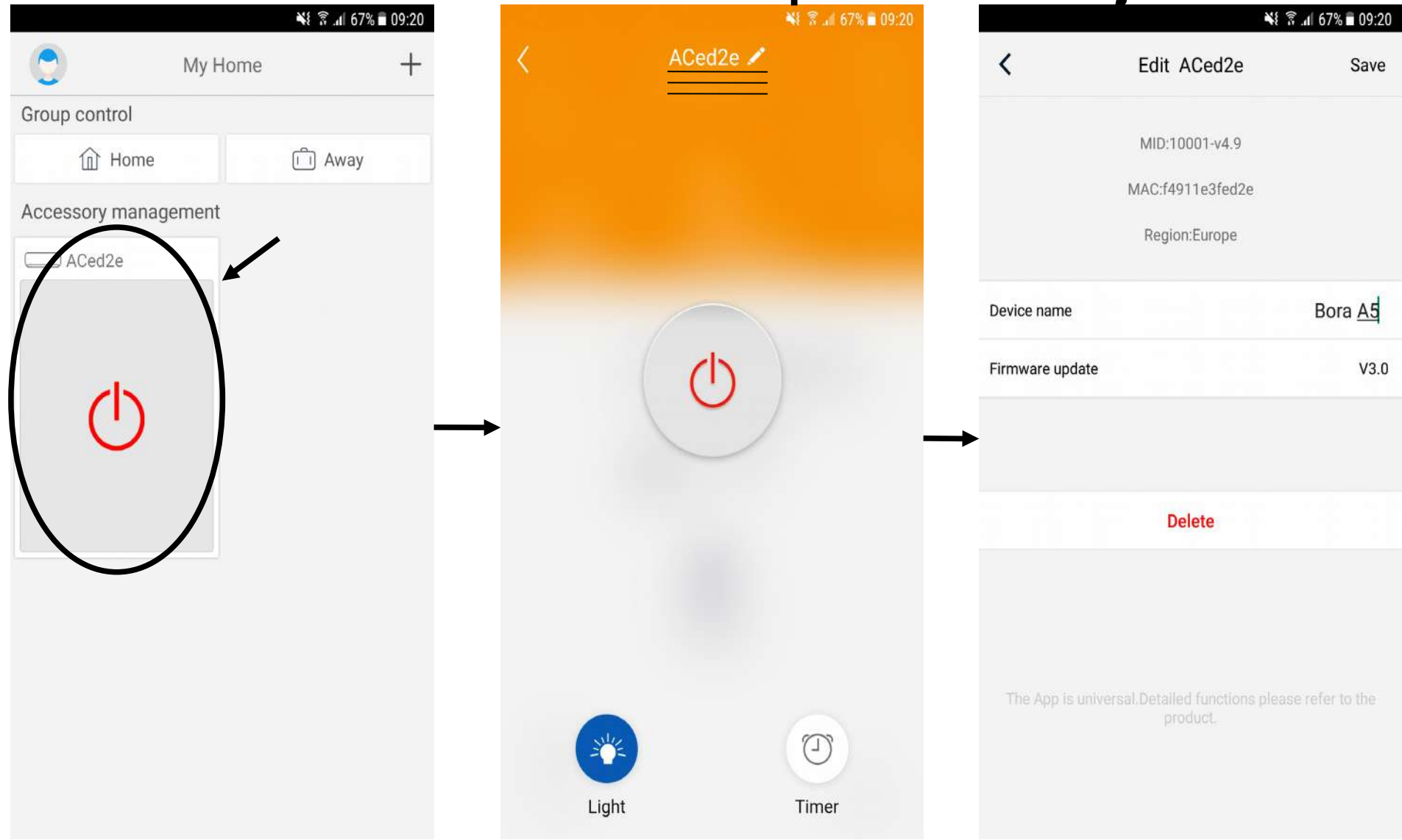
Daca dupa auto-cautarea aparatului, apare aceasta eroare, se incearca iar prin resetarea modulului, tinand apasate butoanele aferente fiecarului tip de telecomanda.



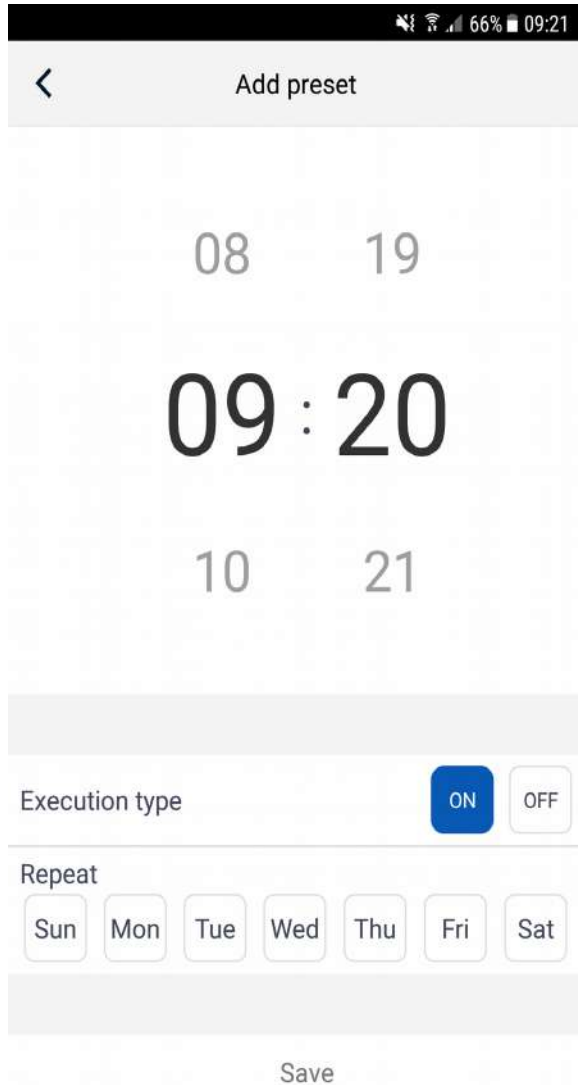
Mesaj primit in aplicatie dupa detectarea corecta a aparatului.



Dupa recunoastere, numele aparatului poate fi editat conform pasilor de mai jos



Programare saptamanala



66% 09:21

Add preset

08 19

09:20

10 21

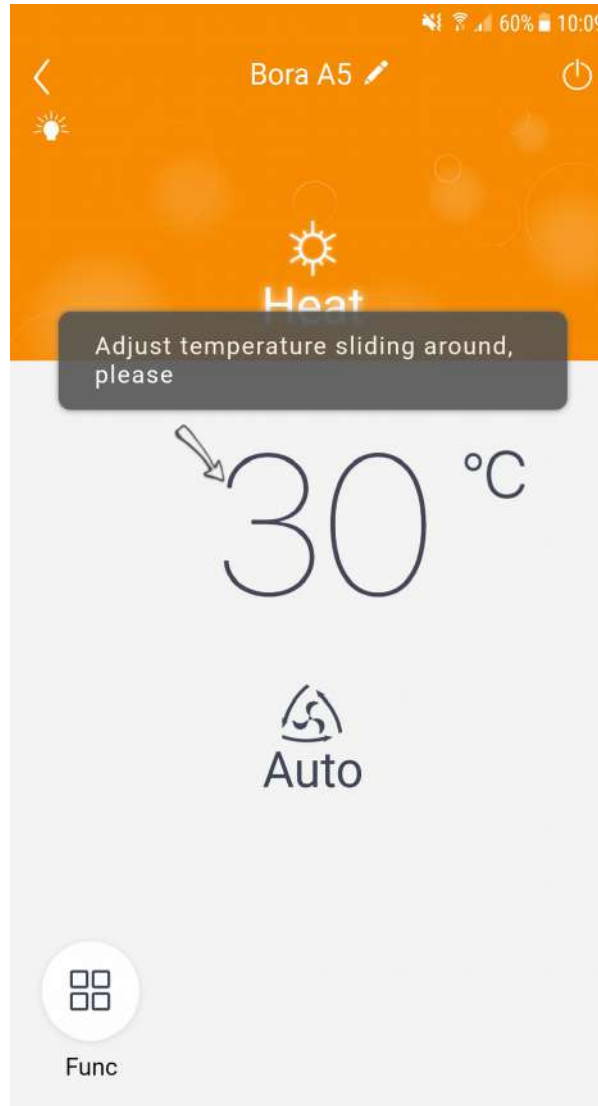
Execution type ON OFF

Repeat

Sun Mon Tue Wed Thu Fri Sat

Save

Regimul de functionare



60% 10:09

Bora A5

Heat

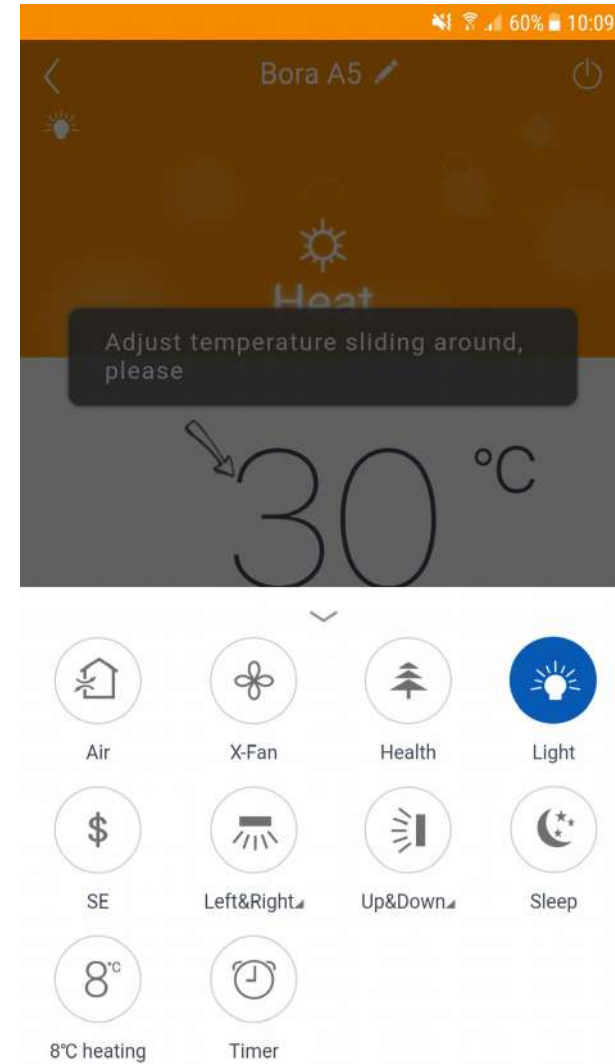
Adjust temperature sliding around, please

30 °C

Auto

Func

Funcțiile aplicatiei



60% 10:09

Bora A5

Heat

Adjust temperature sliding around, please

30 °C

- Air
- X-Fan
- Health
- Light
- SE
- Left&Right
- Up&Down
- Sleep
- 8°C heating
- Timer

Va multumesc

